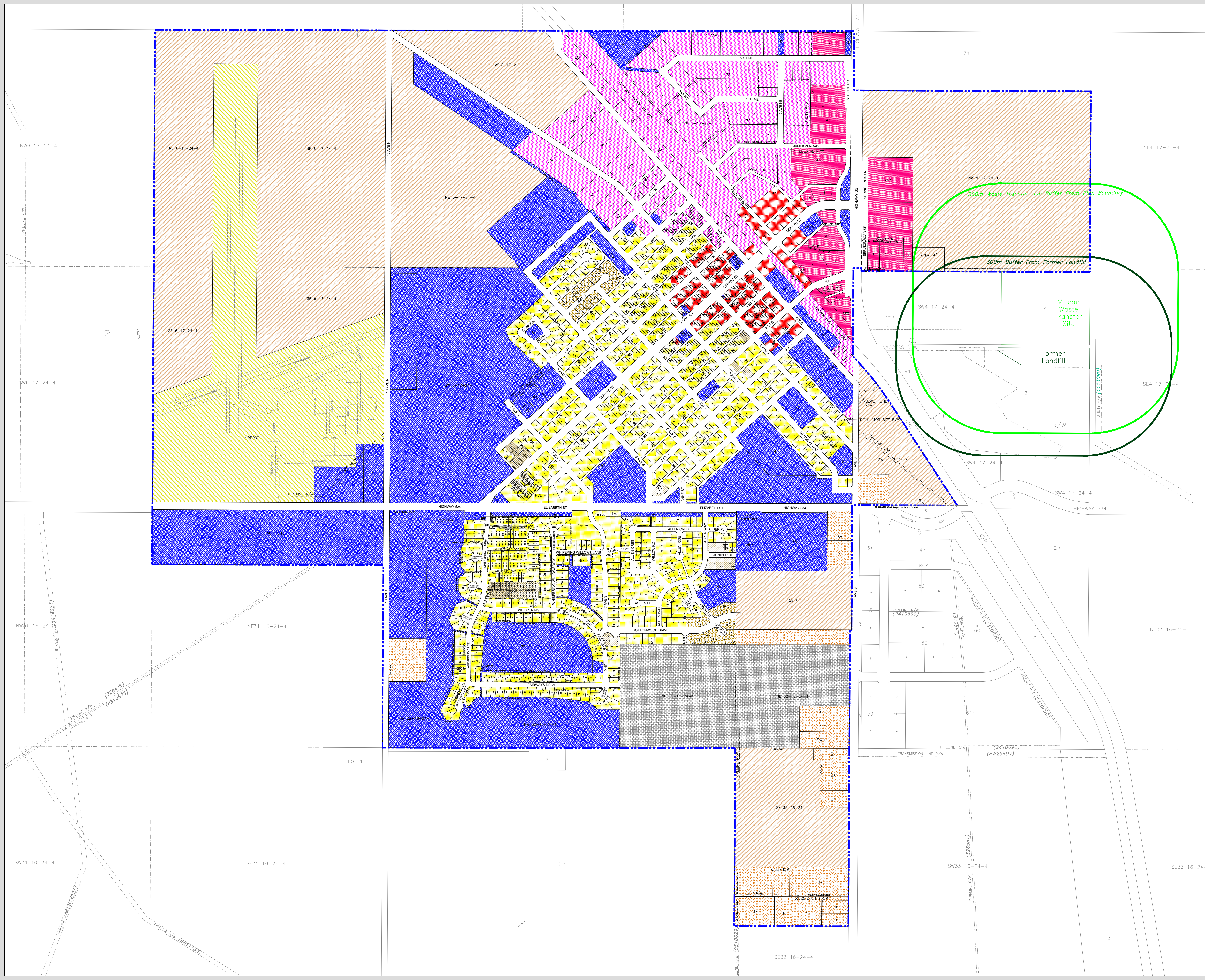


**TOWN OF VULCAN**  
 NE 32, NW 32, SE 32, Ptn NE 31  
 In Twp 16, Rge 24, W4M And  
 SW 4, All 5, NE 6, Ptn NW4  
 In Twp 17, Rge 24, W4M



**LAND USE DISTRICTS MAP**  
 Land Use Bylaw No. 1437-15, April 27, 2015  
 (Amended To And Including Bylaw No. 1508-22)

- Residential R-1
  - Manufactured Home R-2
  - Country Residential R-3
  - Multi-Unit Residential R-4
  - Retail / Commercial C-1
  - Highway Commercial C-2
  - Industrial I-1
  - Transitional Agriculture TA
  - Public P-1
  - Direct Control DC
  - Airport AP
- 
- Town Boundary
  - 300m Waste Transfer Site Buffer
  - 300m Former Landfill Buffer